

X6



125 - 135



McCORMICK X6, THE ALL-ROUND SPECIALIST

McCormick has contributed to writing the history of agricultural mechanisation. A history that continues today with Argo Tractors, an industrial Group that places technological innovation and quality at the core of its business. Driven by passion and commitment, McCormick engineers have developed a truly innovative range of utility tractors, among which the new **X6** stands out for versatility, simplicity, reliability and comfort.

Designed with flexibility in mind, this compact tractor will handle a variety of tasks both in the field and on the farm, from soil preparation, sowing and haymaking through to barn management activities and high-speed transport operations. The **X6** tractor is engineered and built to carry out all daily tasks with total reliability and comfort, making it the perfect choice for small- and medium-scale stand-alone farm businesses that look for cost-effective fleet management solutions.

Highly versatile and fully customisable, the **X6** can be tailored to meet the specific needs of each farm. Key features of the **X6** tractor include:

› **Cab:** Four-post design for enhanced visibility; ergonomic controls for maximum comfort of operation; low-profile roof

for easy access to height-restricted buildings; FOPS-certified transparent roof hatch for extra visibility during front loader operation; up to 10 full-LED work lights, six of which located on the roof, for enhanced lighting during night work; satellite-based guidance and ISObus system to improve productivity and profitability.

› **Engine:** New FPT F36 3.6L engine delivering up to 127 hp. This engine meets the Stage V emissions regulations using the HI-eSCR2 system located under the bonnet.

› **Transmission:** XtraShift transmission with three-stage HML powershift (high, medium, low), Reverse Power Shuttle (RPS) and creeper providing 48 FWD + 16 REV speeds.

› **Axle:** The **X6** offers a choice of three front axles designed and developed by McCormick: suspended, rigid, rigid narrow. The rear tyres measure 38 inches.

› **Hydraulics:** The closed-centre, load-sensing hydraulic system with variable displacement pump provides a flow rate of 110 l/min for greater efficiency, better fuel economy and less engine noise.

› **Options:** Front hitch and PTO, M30 front loader.

Choosing McCormick means you can count on a reliable partner that gives you cutting-edge technology and unmatched versatility without compromising on simplicity.

HIGHLIGHTS

Cab

- › Total View Slim cab with full glazing.
- › Mechanical cab suspension for superior comfort.
- › Air-suspended driver's seat.
- › Multifunction joystick for control of transmission and front loader.
- › 8.4-inch touch screen monitor for satellite-based guidance and ISOBUS system.
- › Climate control.
- › Panoramic roof hatch: low-profile roof for easy access to small buildings and certified FOPS structure.

Design

- › New bonnet design for improved forward visibility.
- › Interior with automotive-like fit and finish.
- › Up to 10 full-LED working lights, six of which on the roof, for perfect visibility during night-time operation.

Engine

- › New FPT F36 3.6L engine delivering up to 127 hp.
- › High torque already at 1300 rpm, to reduce fuel consumption and noise.
- › HI-eSCR2 system tucked under the bonnet for Stage V compliance and better working visibility.
- › New 170 l high-capacity fuel tank.
- › 90-degree tilting bonnet for fast and easy maintenance.

Transmission

- › XtraShift transmission with three-stage HML PowerShift.
- › Park Lock, for maximum safety on steep slopes.
- › Top speed: 50 km/h for faster transport operations.

Axles

- › Rigid-mounted front axle: wide or narrow, to vary the tractor's front track width.

- › Optional suspended front axle with integrated brakes.
- › Electrohydraulic 4WD and differential lock engagement with automatic functions.

Hydraulics

- › Closed-centre hydraulic system with up to 110 l/min flow rate – Auxiliary 11-litre hydraulic tank for implements that require a high hydraulic oil flow.
- › Up to 7 mechanical or electronic remote valves.
- › Rear hitch with up to 6000 kg lift capacity.
- › Four-speed rear PTO.

On-board technology

- › ISOBUS and Precision Steering Management systems for maximum working accuracy and efficiency.
- › Fleet & Remote Diagnostics Management and Farm Management systems for efficient and integrated fleet and farm management.

HYDRAULICS

**Innovative
and Configurable**
page 20

DIGITAL SOLUTIONS

More Precision – More Productivity
page 30

CAB

Visibility and Comfort
page 6

ISOBUS

Efficient Implement Control
page 34

ELECTRONIC REAR HITCH

Powerful and Precise
page 28

ENGINE

**More Power –
Less Consumption –
Stage V**
page 10

SUSPENDED AXLE

Traction – Comfort – Safety
page 18

TRANSMISSION

Versatile
page 14





TOTAL VIEW SLIM CAB, DESIGNED FOR SIMPLICITY

Just easy: when simplicity is at the heart of design.

Inside the Total View Slim cab, simplicity is wanted, sought after and planned with a specific purpose in mind – to make those long working days in the field less tiring and stressful. Not only the cab, but also the whole tractor has been designed and built with simplicity in mind to ensure ultimate efficiency. You don't need to be an engineer to use this tractor, because the McCormick **X6** is *just easy*.

You are inside the cab but it looks like you are outside.

The generous glazed surface and the transparent roof hatch of the Total View Slim cab offer the operator unequalled all-round visibility, making front loader operations and manoeuvres in tight spaces, where a clear, unobstructed view at close range is paramount, easier and safer. Up to ten full-LED working lights, six of which located on the cab roof, provide reliable illumination for night time operation.

Functional and user-friendly, the Total View Slim cab has all you need.

Equipped with all you need to work efficiently, the Total View Slim cab turns simplicity into efficiency. The mechanical suspension system, the air-suspended seat and the front axle suspension absorb vibrations and shocks, providing superior ride comfort. Perfectly sound-insulated, the cab interior features an automotive-grade fit and finish and a highly-efficient climate control that maintains an ideal cab temperature whatever the outdoor weather conditions. The driving position is equipped with a telescopic, tilt-adjustable steering wheel, DAB+ radio with USB port, Bluetooth and hands-free phone.

HIGHLIGHTS

- › McCormick's next-generation design.
- › Mechanical cab suspension with exclusive Panhard rod system for stability and comfort on all terrains.
- › Air-suspended swivel seat with tilt adjustment and hide-away buddy seat for easier access to the driving position.
- › Tilt-and depth-adjustable steering column tilting with instrument panel.
- › Automotive-grade fit and finish with dirt-resistant, dark-coloured soft-touch materials.
- › Radio DAB+ with USB port, MP3 player, Bluetooth and microphone.
- › Optimum climate control with air-conditioning integrated into the cab roof.
- › Opening transparent roof hatch for extra visibility during front loader operations.
- › Up to 10 full-LED working lights, six of which located on the cab roof, for proper illumination during night work.

TOTAL VIEW SLIM CAB: ALL-ROUND VISIBILITY AND TOTAL COMFORT

The Total View Slim cab reduces operator fatigue during long working days in the field through a variety of technical solutions. The four-post design, the generous glazed surface and the panoramic roof ensure unequalled all-round visibility, making front loader work and manoeuvring in tight spaces, where short-range visibility is critical, easier and safer. The Total View Slim cab is FOPS certified to protect operators from falling objects and is further equipped with a mechanical suspension that improves ride comfort on rough terrain.

AIR CONDITIONING AND OPENING ROOF HATCH

The heating, ventilation and air conditioning system, located on the cab roof, maintains a comfortable working environment all year round. The rear windscreen and the roof hatch can be opened to allow natural ventilation.

BLUETOOTH RADIO

The DAB+ radio system also allows listening to music through the Bluetooth, the MP3 player, the AUX cable or a USB flash drive, while an integrated microphone allows the driver to make hands-free phone calls.

STEERING WHEEL AND DASHBOARD

The steering wheel is telescopic and tilt adjustable. The dashboard, which tilts with the steering column, features intuitive digital and analog instruments that enable easy and complete control of all tractor functions.

DRIVER'S SEAT AND HIDE-AWAY BUDDY SEAT

Spacious and comfortable, the driver's seat is available with either a mechanical or air suspension system that can be adjusted to suit the driver's weight. The handy buddy seat folds neatly away to allow easier access to the cab.

Spacious and perfectly soundproofed, the cab interior features an automotive-grade fit and finish with dirt-resistant dark-coloured soft-touch materials. The air conditioner, integrated into the cab roof, maintains a comfortable working environment whatever the outdoor weather conditions. The rear windscreen and the roof hatch can be opened to provide natural ventilation.

ACCESS TO DRIVING POSITION

Fully glazed rear-hinged doors provide easy access to the driving position. Wide, sturdy steps and handrails fitted to the cab posts and to the doors allow operators to safely climb up and down the tractor.

MECHANICAL CAB SUSPENSION

The new mechanical cab suspension system isolates the tractor body from wheel vibrations induced by uneven terrain for maximum ride comfort. In addition, the Panhard rod improves vertical stability, preventing side-to-side cab oscillation, for added comfort of operation.





MINIMUM CONSUMPTION FOR MAXIMUM EFFICIENCY

Compare consumptions: the X6 is best in class for fuel economy.

The **X6** offers excellent fuel economy for the power produced. This is due to an innovative injection strategy of the common rail system that allows the maximum torque to be reached already at 1300 rpm, thereby reducing consumption and noise. In addition, the Engine Memo switch allows the operator to store and recall the engine speed best suited for the job in hand, resulting in easier and more efficient operation.

Time savings: maintenance has never been so quick.

Under the bonnet of the **X6**, the most frequently used components are within easy reach and simple to maintain. The radiator grill, for example, can be removed to allow easy cleaning, while the air filter is located in an ergonomic position to enable quick replacement. Not only this, the service intervals are now longer and service operations faster, as major maintenance activities can be performed without disassembling any parts.

HI-eSCR2 system: Stage V compliance and full working visibility.

The **X6** tractor fully meets the Stage V emissions regulations using the innovative HI-eSCR2 exhaust gas aftertreatment system. This technology integrates the SCR catalyst into a maintenance-free DPF particulate filter. The HI-eSCR2 system fits under the bonnet without any modifications needed, allowing full visibility to the front and sides of the vehicle.

FPT F36 ENGINE, YOUR TRUSTED WORKMATE

HIGHLIGHTS

- › New FPT NEF F36 Stage V engine with up to 127 hp.
- › Turbocharged and intercooled with electronic common rail injection system.
- › HI-eSCR2 aftertreatment system to meet Stage V emissions regulations.
- › New 170 l fuel tank for extended operation without refuelling.
- › AdBlue tank with 23 l capacity.

The **X6** tractors are powered by new FPT F36 3.6-litre, 16-valve, four-cylinder turbocharged engines with intercooler, electronic common rail injection system and HI-eSCR2 technology that meet Stage V emissions regulations. The maximum torque, available already at 1300 rpm, provides excellent fuel economy while reducing engine noise and wear.

Fuel economy

The FPT F36 engine is equipped with an electronic high-pressure common rail injection system that optimises fuel atomisation and combustion, thereby improving engine performance and fuel economy while reducing emissions. Fuel efficiency is further enhanced by the Engine Memo switch, a device that allows the operator to store and recall the engine speed best suited to the task at hand. The **X6** tractor is equipped with a 170-litre fuel tank that guarantees many hours of operation without refuelling.

Stage V compliance and maximum operating visibility

The HI-eSCR2 exhaust aftertreatment system – a technology that combines a selective catalytic reduction system (SCR) and a maintenance-free diesel particulate filter (DPF) – enables the **X6** to fully comply with Stage V emissions regulations. The HI-eSCR2 system is tucked under the bonnet making for a clean, uncluttered design that provides a clear, unobstructed view to the front and sides and does not compromise on the tractor's compact size.

ADBLUE TANK

Injected into the SCR catalyst system, the AdBlue fluid significantly reduces NOx emissions to meet Stage V regulations. The AdBlue tank has a capacity of 23 litres for extended run times.





A RUGGED TRANSMISSION THAT NEVER LETS YOU DOWN

The X6 always works at full strength.

The **X6** features an XtraShift transmission with a three-speed on-the-go powershift (HML) that provides up to 48 forward and 16 reverse speeds with the creeper unit. Derived from higher-class McCormick tractors, the XtraShift transmission is designed to deliver top-notch performance along with total reliability and long-lasting durability under all operating conditions.

Never again a power loss!

When travelling on the road, on mixed terrains or on steep slopes, the XtraShift transmission with its three shift-on-the-go speeds (HML) will maintain a constant power, keeping your tractor running at peak performance under all conditions. The transmission can also be controlled from the multifunction joystick.

The XtraShift transmission is designed with efficiency in mind.

Designed to enhance the features of the **X6**, the XtraShift transmission delivers outstanding performance and ultimate operator comfort under all operating conditions.

HIGHLIGHTS

- › XtraShift transmission with three-speed powershift (HML).
- › Creeper with 48 FWD + 16 REV gears and minimum speed of 309 m/h.
- › Top Fifty: 50 km/h for faster road transport.
- › Eco Forty: 40 km/h at low engine rpm, for lower consumption and noise.
- › De-clutch function for clutchless gear shifting.
- › Steering-column reverse power shuttle with response modulation

XTRASHIFT TRANSMISSION, EFFICIENT BOTH IN THE FIELD AND ON THE ROAD



The XtraShift electrohydraulic transmission offers up to 40 forward and 16 reverse speeds with creeper. Thanks to well-spaced gear ratios, the **X6** responds efficiently to the specific needs of each farm. With a minimum creep speed of 309 m/h and a maximum travel speed of 50 km/h, the **X6** enables efficient operation in the field and safe and fast transport on the road.

XtraShift electrohydraulic Transmission

The XtraShift transmission stands for efficiency: the three-stage HML powershift triples the 12 basic speeds providing 36 forward and 12 reverse gears. With additional creeper speeds, the transmission offers a total of 48 forward and 16 reverse gears, allowing speeds as low as 309 m/h. The de-clutch button and the power shuttle allow the operator to shift through all gears and change from forward to reverse without using the clutch pedal. The powershift and power shuttle response is electronically modulated and adjustable by the operator if required for different tasks.

PARK LOCK, SAFETY GUARANTEED

The XtraShift transmission can be equipped with Park Lock, a mechanical locking device which locks the transmission for added safety when parking the tractor on steep inclines.

HIGHLIGHTS

- › Suspended front axle: traction, accuracy, stability and comfort on all terrains.
- › The X6 combines the tractive capacity of high-end tractors with the low soil compaction of mid-range tractors.
- › Automatic engagement/disengagement of the electrohydraulic 4WD and differential lock for improved traction performance.

WITH THE McCORMICK X6 LIGHTNESS ENTERS THE FIELD



The X6 is for farmers who want less soil compaction.

During field work, the **X6** will ensure reduced soil compaction thanks to wide tyres and an excellent weight distribution – 45% on the front axle and 55% on the rear axle. These features make the **X6** the best-balanced tractor in its power class.

With the X6 tractor driving is easy and precise.

The **X6** allows easy and precise driving and does not require continuous correction of the vehicle direction, so the operator can better concentrate on the job in hand and will feel less fatigued after a long day in the field.

Electrohydraulic four-wheel drive engagement for maximum safety.

The electro-hydraulically controlled four-wheel drive engages and disengages automatically. This improves traction performance and reduces wheel slip on all terrains, allowing the operator to better concentrate on the task at hand.



Optimum stability in any situation

The **X6** offers outstanding traction and manoeuvrability, ensuring optimum grip and stability for superior driving comfort on all terrains. The rugged front axle, either rigid-mounted or with independent suspensions, is equipped with Hydralock full locking differential and electrohydraulic four-wheel drive engagement. This ensures maximum efficiency and safety in any situation, including when working with front-mounted implements or a front loader. The rear axle, derived from higher class tractors, is equally sturdy and reliable as the front axle.

Combining wide axle oscillation and high ground clearance with a 55-degree steering angle, the **X6** ensures optimum manoeuvrability and driving accuracy on all terrains. In addition, the hydrostatic power steering delivers smooth steering control even at low engine rpm. The suspended axle allows a top speed of 50 km/h.



Suspended front axle

The **X6** features a front axle with electronically-controlled dual-cylinder central suspension system. The suspended axle is equipped with differential lock and wet disc brakes which, combined with the rear brakes, ensure safe and efficient braking on all four wheels.

The suspended front axle allows the **X6** to tackle extremely rough terrain by ensuring outstanding traction on each wheel for greater stability and control. The front suspension system improves traction and ease of handling in the field and increases safety, speed and operator comfort on the road.

RIGID FRONT AXLE: WIDE OR NARROW

The **X6** can be equipped with either a wide or narrow rigid-mounted front axle. Based on the axle width, the tractor can be fitted with different tyre sizes to suit specific needs.

INTEGRATED BRAKE SYSTEM (IBS)

The IBS braking system with wet disc brakes integrated into the front axle provides efficient braking on all four wheels. The system reduces stopping distances by up to 50% for maximum safety when travelling on the road. When the front and rear brakes are activated, they produce a braking force proportional to the foot pressure applied on the brake pedal, thereby ensuring safe, controlled stopping power in any situation.

Integrated with the hydraulic or pneumatic trailer brakes, the IBS system will ensure efficient and well-balanced braking of the tractor-trailer combination for safe stopping even on steep slopes.

AUTOMATIC 4WD AND DIFFERENTIAL LOCK ENGAGEMENT

The **X6** is equipped with combined front and rear differential locks to reduce wheel slip and maximise traction. The system automatically engages or disengages the differential lock and the four-wheel drive, making operation in the field easier and more efficient.



THE **HYDRAULIC SYSTEM** IS TAILORED TO YOUR NEEDS

The X6 gives you greater versatility in implement use.

The front hitch of the **X6** is factory fitted with a reinforcing frame that connects directly to the transmission. This adds greater versatility to the tractor for applications using front-mounted implements.

Working with the rear hitch has never been so easy.

The electronic management and the ergonomically-designed, intuitive console make using the rear hitch so much easier, smoother and precise, thanks to the automatic control of the hitch position. The rear hitch has a maximum lifting capacity of 6000 kg and is equipped with a damping feature that prevents tractor from pitching when travelling with raised implements, resulting in a smoother and more comfortable ride.

CCLS hydraulics improve tractor efficiency and fuel economy.

To optimise efficiency and provide first-class performance, the **X6** is equipped with closed-centre load-sensing hydraulics. The CCLS hydraulic system is designed to deliver the required amount of oil to the remote valves only when demanded by the operator, thereby reducing fuel consumption significantly.



GREAT VERSATILITY FOR INCREASED PRODUCTIVITY



The **X6** tractor range is configured and customised to suit the specific requirements of each farmer. Thanks to its versatility, this tractor can be simultaneously equipped with a front hitch and a front loader, allowing the use of front and rear implement combinations for unmatched productivity.

CHOICE OF TWO- OR FOUR-SPEED PTO

The rear PTO offers two speeds: 540/540e rpm or 540/1000 rpm. A four-speed PTO providing 540/540E/1000/1000E rpm is also available. A hydraulically operated wet multidisc clutch enables smooth and modulated engagement of the PTO, ensuring a soft start-up of heavy implements. External PTO controls are located on the rear fenders, making it easier to attach implements from the ground.



HIGHLIGHTS

- › Front hitch and PTO for maximum versatility.
- › Up to 7 rear- and mid-mounted remote valves.

AUTO PTO FUNCTION FOR SAFE PTO ENGAGEMENT

The Auto PTO function will automatically disengage and reengage the PTO at three-point linkage heights set by the operator. This feature gives the operator precise control of the implement during headland turns, reducing the risk of driveline damage.



Easy-to-use electronic rear hitch

The electronically-controlled rear hitch features ergonomically-designed easy-to-use controls and is equipped with lower link draft sensing for precise implement operation. The three-point hitch is Category II and offers a maximum lift capacity of 6000 kg. External hitch controls are located on the rear fenders, making it easier to attach implements from the ground. The **X6** is equipped with a hitch damping function that prevents the tractor from pitching when travelling with hitch-mounted implements.





HIGH-PERFORMANCE HYDRAULIC SYSTEM

The **X6** features a closed-centre load-sensing hydraulic system (CCLS) with a variable-displacement pump that adjusts the flow rate according to the system requirements. This technology eliminates unnecessary power waste, reduces consumption and noise, and improves performance. The hydraulic system of the **X6** provides a total flow of 110 l/min to operate the steering system, rear hitch and remote valves and allows simultaneous operation of front and rear implements. An 11-litre auxiliary hydraulic tank is available for implements requiring high oil take-out such as tipping trailers. A dedicated pump supplies 38.5 l/min to the steering system ensuring smooth and easy turning, even at low engine rpm or during heavy-duty applications, for enhanced operator comfort and greater productivity.

Remote valves for any application needs

The **X6** offers up to five rear remote valves. Three valves are mechanically operated by levers and two are controlled electro-hydraulically via fingertip controls. A four-way flow divider allows two hydraulic units to be controlled with a single remote valve to operate the hydraulic top link or the right lifting rod. Two additional mechanical mid-mount remotes, controlled by the multifunction joystick, are also available for the use of an M30 front loader, taking to seven the total number of remote valves. The **X6** offers four types of remotes that can be used in combination to suit different application needs:

- › **Standard:** double-acting;
- › **Kick-out:** with automatic detent release;
- › **Float:** for implements that follow the contour of the ground;
- › **Hydraulic motor:** for the use of hydraulic motors.

Each option allows the tractor to work with a front hitch, a front loader, a rear hitch and a variety of front- and rear-mounted implements for maximum efficiency and productivity. High-quality quick-release couplings, conveniently fitted on both the front and rear of the tractor, allow quick and easy connection/disconnection of hydraulic lines for fast operation.



FRONT AND REAR HITCH



FLOW SELECTOR FOR MULTIPLE HYDRAULIC FUNCTIONS

The flow selector features a two-way flow divider with four quick couplings that operate two hydraulic functions with a single remote valve. This means the operator can control up to six hydraulic units with five remotes and one flow selector.

McCORMICK M30 FRONT LOADER: BUILT FOR POWER AND VERSATILITY



Designed to be integrated into the **X6** tractor, the McCormick M30 front loader is built from HLE (High Limit Elasticity) steel, a material capable of withstanding impressive loads. The main strong points of the M30 front loader are the following:

- › All hydraulic lines are hidden inside the loader arms to ensure unobstructed view during operation;
- › All the piping of the hydraulic system is rigid to reduce oil overheating during intensive use and to simplify maintenance;
- › A position indicator allows the operator to quickly determine the implement position;
- › A suspension with two nitrogen-charged accumulators placed

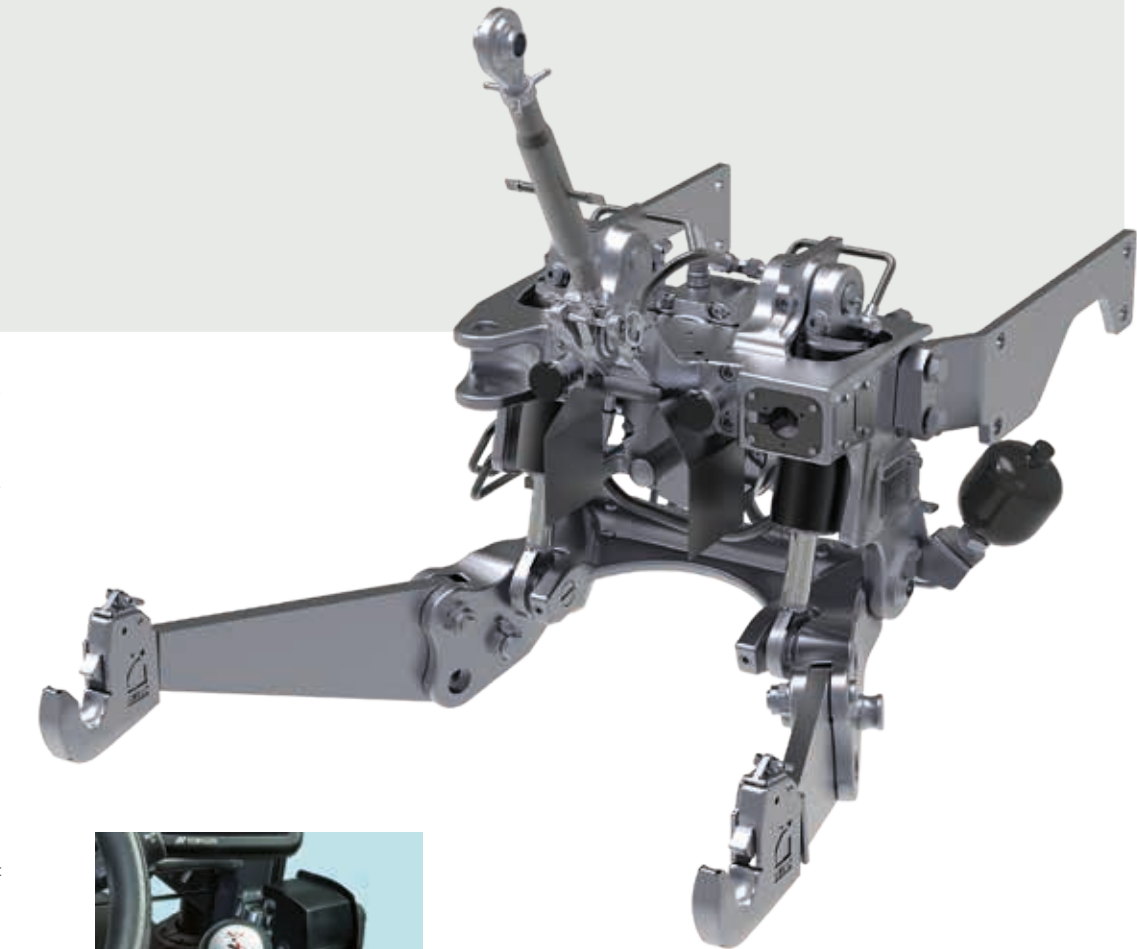
Front hitch and pto

A front hitch and PTO are available as an option to add greater versatility to the **X6** tractor for applications using rear- and front-mounted implement combinations. The front hitch is Category II and can lift up to 2250 kg thanks to the reinforcing frame directly connected to the transmission. The front hitch of the **X6** features raise/lower and float control functions. The 1000-rpm PTO is engaged via a pushbutton. External PTO and hitch controls are located on the rear fenders making it easier to attach implements from the ground. The front hitch is compatible with the front loader and allows for quick implement change.

between the cylinders ensures a smooth ride of the loader at all times;

- › The **X6** is equipped with supports designed to make attachment and removal of the M30 front loader easier;
- › The M30 front loader can be used in conjunction with a front-mounted hitch;
- › The M30 has a maximum lift capacity of 1880 kg;
- › Used in combination with a Euro implement carrier, the M30 can be fitted with a wide range of implements.

The **X6** further features a high-visibility transparent roof hatch that enables the operator to remain comfortably seated while working with the loader fully raised. Designed to be the perfect match for the **X6** tractor, the M30 front loader delivers maximum productivity in any application.





McCORMICK **DIGITAL SOLUTIONS** BRING THE FUTURE TO THE FIELD

Technological innovation improves working conditions, increases productivity and protects the environment. Following this philosophy, the Argo Tractors Group has prepared its tractors for the most cutting-edge digital and telematic technologies. This will help farmers manage their machinery fleets and their farms more efficiently and remotely, wherever they are. **McCormick Digital Solutions** offers a range of advanced functionalities::

Telemetry and Remote Diagnostics: Thanks to the Fleet & Remote Diagnostics Management system, telemetry monitors your fleet analysing tractor performance data, while remote diagnostics enables tractor parameters to be monitored and managed from a remote location

Precision Farming: The Precision Steering Management satellite guidance system improves working accuracy and efficiency; the ISObus system allows optimum control of AEF-certified compatible implements.

Farm Management: McCormick Farm manages prescription maps and simplifies farm management.

Digital Services: The My McCormick app provides easy access to the McCormick world.

Cloud Data: The Agrirouter cloud platform allows integrated communication among all services.

McCormick Digital Solutions give you more performance, more efficiency and more profitability while improving simplicity, safety and comfort.



FLEET & REMOTE DIAGNOSTICS MANAGEMENT: PROFIT ASSURED



McCormick, a brand globally recognised as synonymous with high performance and cuttingedge technology, equips all its tractors with remote management and diagnostic capabilities. The **McCormick Fleet & Remote Diagnostics Management system** helps farmers make informed data-driven decisions that will reduce their operating costs while increasing the efficiency and productivity of their farms. The system, which can be easily accessed from a computer or a mobile device, allows farmers to remotely monitor the activity of each tractor and analyse the data of their entire fleet of vehicles. This advanced solution is based upon four key elements:

- 1. Real-time fleet monitoring
- 2. Data analysis
- 3. Scheduled maintenance and remote diagnostics
- 4. Activity history

McCormick is fully committed to addressing the needs of modern agriculture with concrete and effective solutions. The **McCormick Fleet Remote Diagnostics Management system** helps farmers manage their farms more efficiently by favouring the most appropriate choices in order to maintain their tractors in good working order, optimise their work and increase their business profitability.

1. Real-time fleet monitoring: The system displays at any time the exact location of each tractor in a fleet and, using the Geofencing technology, notifies whenever a vehicle enters or exits a specified zone. It also measures the efficiency of each tractor by checking parameters like speed, engine hours and RPMs, fuel and AdBlue levels, average consumptions and work progress.

2. Data analysis: The data coming from the tractors allow the system to measure the productivity of each vehicle in the fleet and the farm's operating profit. These data are essential to monitor and reduce costs, make predictions, organise work plans and take informed decisions.

3. Scheduled maintenance and remote diagnostics: The tractor fleet is managed in a simple and fast manner. In case of failure, our aftersales service intervenes remotely in real time in order to adopt the most appropriate solutions and to improve the tractor's performance, thereby reducing downtime and extending the equipment's life.

4. Activity history: This function delimits the work areas and stores the data of the activities performed. This allows the user to better organise the work, increase efficiency and productivity and maximise profitability.



McCORMICK FARM TECHNOLOGY FOR A MORE PRODUCTIVE FARM

McCormick improves the efficiency of your farming operations. But not only this: **McCormick Farm** connects your tractor to an intelligent and intuitive farm management system. This brings farmers a number of benefits in terms of time saving, work simplification and enhanced performance.

360-degree management solutions for your farm

McCormick Farm supports more than 400 different crops and allows virtually all tasks on the farm to be accomplished, including crop management, tracking and planning of field activities, advice on crop protection and irrigation practices, creation and exchange of prescription maps with monitoring of costs and sustainability, export of documents.

Connected to your McCormick

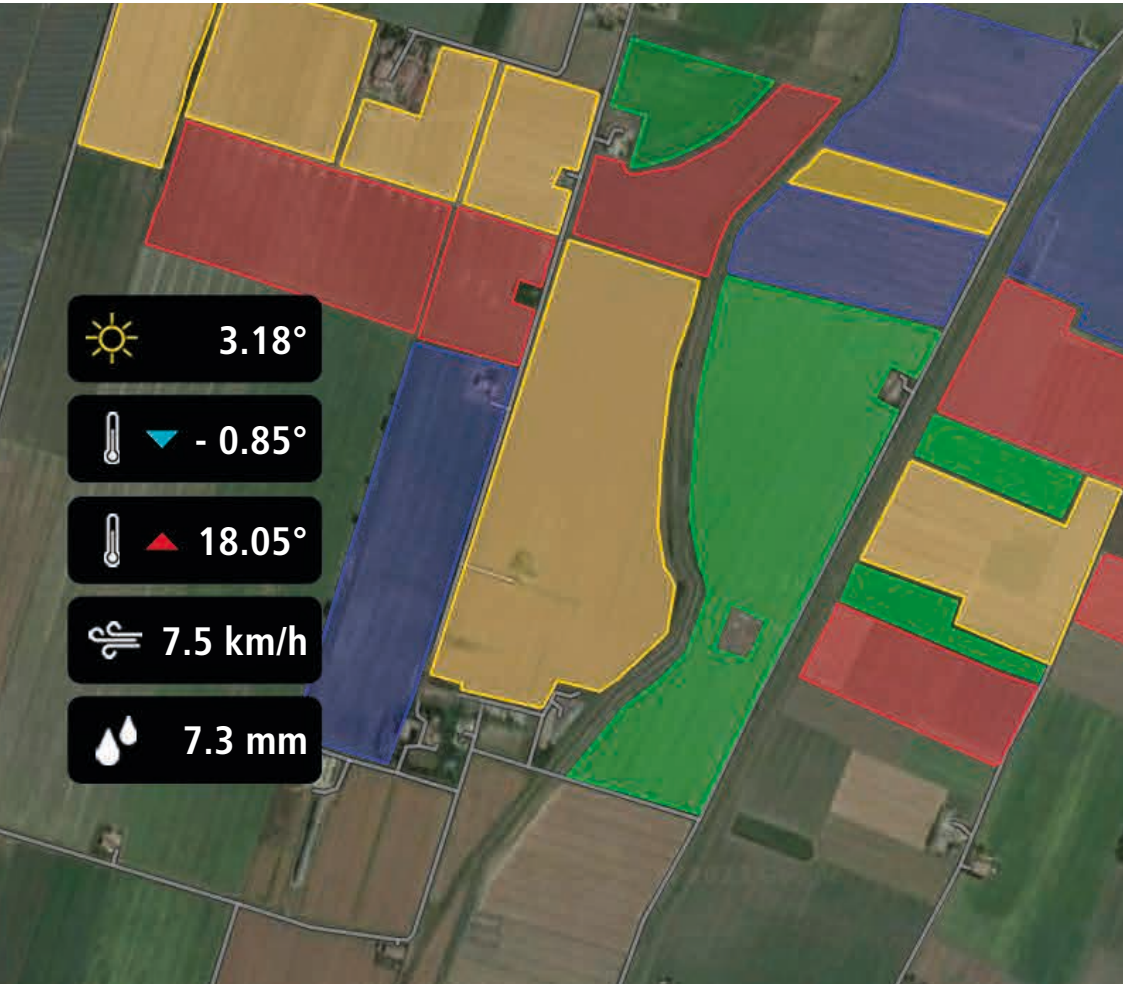
By connecting your McCormick to the **McCormick Farm** app, you can view performance levels and reports on the farming activities carried out in the fields. In addition, you can display prescription maps, A/B lines, boundaries and obstacles.

Always at your fingertips

Whether in the field or on the farm, McCormick is always at your side, thanks to the **McCormick Farm** app for smartphone and tablet. And if you want to run your business from your computer, you may access the web version synchronised with the mobile devices.

Simple and intuitive

McCormick Farm is designed to be clear and user-friendly. A support chat answers questions about the use of the app.





PRECISION STEERING MANAGEMENT FOR PRECISION PERFORMANCE



Precision farming has been in existence ever since man started to cultivate land. Today, thanks to technological development, precision farming is carried out with cutting-edge tools that improve efficiency and increase productivity.

McCormick uses the innovative **PSM (Precision Steering Management)** system, a set of integrated devices for satellite-assisted guidance that can be managed from the tractor cab via an intuitive touch screen, on which the tasks to be performed in the field can be easily imported. Thanks to the precise automated steering control, the tractor only deviates 2 cm from the desired route, eliminating overlaps. This helps operators work with more speed and accuracy and reduces operating costs and environmental impact while raising efficiency and productivity in the field.

ISOBUS & ISOBUS GREEN MAKE YOUR WORK SIMPLE AND EFFICIENT

In 2015, Argo Tractors received the AEF ISObus certification. The **ISObus** system is the standard protocol through which the on-board computer communicates with the tractor and implements. The automatic control of **ISObus**-compatible implements allows variable-rate applications to be delivered through prescription maps generated by McCormick Farm. All **ISObus**-compatible implements are managed via a DSM 12"

touch screen monitor to improve operating efficiency and productivity.

McCormick is a leading participant in the innovative **ISObus Green** project. This project allows farmers to retrofit their mechanical implements with the technology so as to connect them to the tractor's **ISObus** system. This solution maximises the efficiency of every implement.

Precision Steering Management & ISObus bring benefits to the field

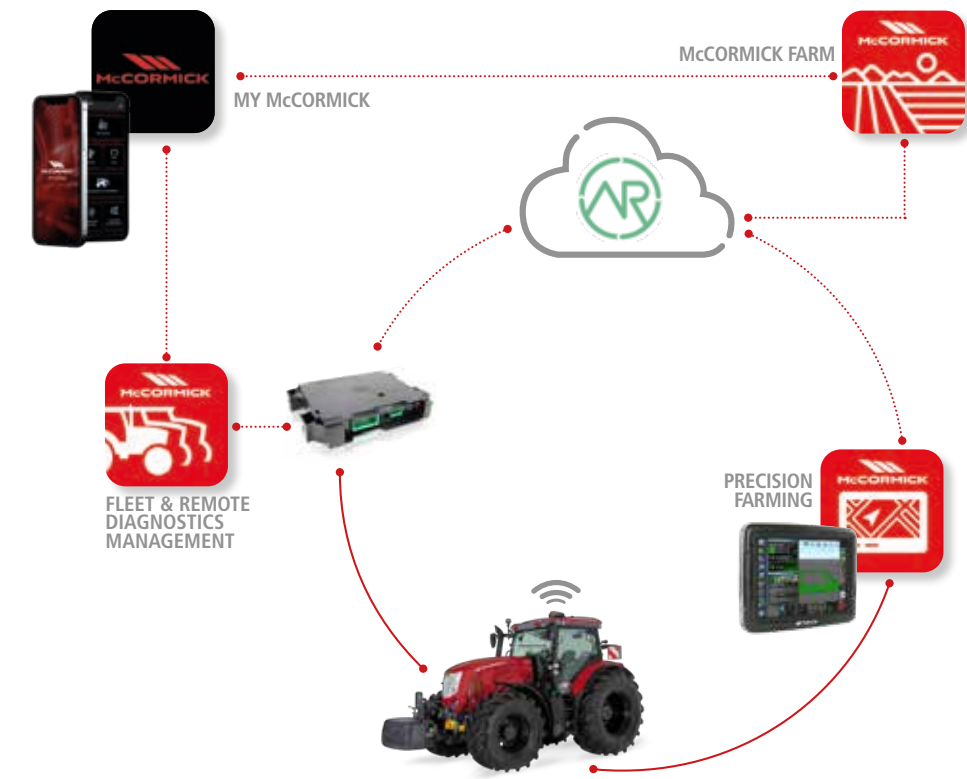
The **Precision Steering Management** and the **ISObus** system are innovative technologies adopted by McCormick to increase efficiency and productivity while improving comfort and safety:

- › All implement activities are managed with a high level of accuracy, including in automatic mode.
- › Difficult manoeuvres are simplified, thereby reducing operator fatigue.
- › When the driver must attend to driving and simultaneously control the implements, the PSM satellite-based guidance system will allow them to fully concentrate on the task at hand.
- › The satellite guidance system tracks field operations with maximum accuracy.

Thanks to the RTK protocols, the automatic steering allows a deviation of only 2 cm from the set route.

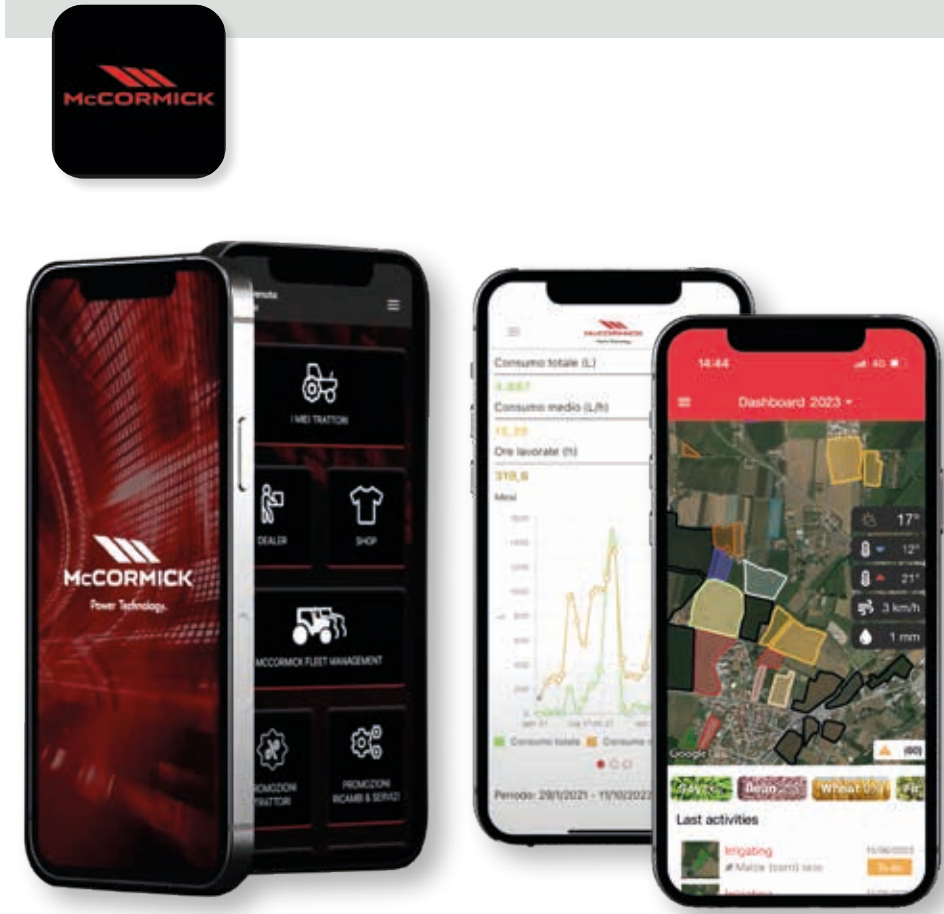
- › Reducing the travelled distance in the field reduces tractor and implement wear and tear and saves fuel.
- › The use of variable-rate applications based on prescription maps generated by the McCormick Farm platform eliminates skips and overlaps, minimizing product waste. Variable-rate technology reduces overuse of water, seed use by 10%, fertilizer use by 16% and herbicide use by up to 60%.
- › Chemical residues are also reduced with significant benefits for the environment.
- › Reports and pre-setting operations are simpler and can be done autonomously without recourse to skilled personnel.

ARGO TRACTORS FLEET ROUTER MANAGEMENT SIMPLIFIES YOUR WORK



The new digital technologies have rapidly multiplied the sources and destinations of data. Today, it is paramount for both small farmers and large agricultural businesses to enable different systems to communicate with each other. For this reason, on March 30, 2023, Argo Tractors has become an **Agrirouter** certified partner with the account *Argo Tractors Fleet Router Management*. **Agrirouter** is a universal data exchange cloud platform that allows the interchange of information between machinery, equipment and software of different manufacturers. **Agrirouter** links different sources and platforms, simplifying the operating processes and ensuring data confidentiality. The operator keeps everything under control with a single system. By connecting the tractor to the implements, including those from different manufacturers, and to the McCormick Farm platform, a simple and efficient integrated management of both machinery and farm is achieved.

MY McCORMICK APP, THE McCORMICK WORLD IN YOUR HAND



The intuitive **My McCormick** app offers the user a 360-degree immersive experience through our Digital Solutions. The **My McCormick** app gives you easy access to all McCormick digital services, allowing you to stay connected with the company through news, insights, offers and customised information. With **My McCormick** you can:

- › Register your McCormick tractor fleet and access the scheduled maintenance program.
- › Access the McCormick Fleet & Remote Diagnostics Management system.
- › Access the McCormick Farm platform.
- › Stay updated with the very latest news and events from the McCormick world.
- › Stay informed on promotions and offers of tractors, original spare parts and services.
- › Stay updated with new products, promotions and events from the nearest dealer.

McCormick is always at your side. With the **My McCormick** app you have the whole McCormick world at your fingertips, so you stay informed and optimise your work making it more efficient and productive.



QUICK MAINTENANCE TO GET YOU UP AND RUNNING IN NO TIME

Designed to deliver maximum efficiency and reliability, the **X6** tractor offers a variety of solutions to simplify and expedite maintenance.

1. The 90-degree tilting bonnet provides easy access to the engine compartment making checks and maintenance faster.
2. The oil filler cap is placed in the lower part of the engine, so topping up of engine oil can be done without opening the bonnet.
3. The engine air filter is conveniently placed to facilitate cleaning and replacement.

4. The coolers in front of the radiator are equipped with a removable dust cover that allows for fast and easy cleaning.
5. The fuel and AdBlue tanks are conveniently placed to allow safe and quick filling. Tank caps have different colours to avoid mix-up.
- 6 The in-cab air filter is easily accessible for maintenance.
7. The oil level in the transmission can be conveniently checked through the oil filler cap with level gauge placed in an easy to reach position.



McCORMICK ORIGINAL SPARE PARTS, THE CORNERSTONE OF YOUR PRODUCTIVITY

Although it works hard, your McCormick tractor always looks good as new. With McCormick original parts time seems to have stopped. Our original spare parts are an integral part of our scheduled maintenance and extended warranty program. Developed by the same engineers who design and manufacture the McCormick tractors, genuine McCormick parts are designed and manufactured to the highest quality standards to ensure reliable and safe performance over time.

The strong points of McCormick original spare parts are the following:

- **Speed:** Spare parts are always shipped within 24 hours of order receipt.

► **Quality:** Each part comes with a 12-month warranty and is marked with a tamper-proof hologram that certifies the product's quality and originality.

► **Value for Money:** Original McCormick parts are reliable and good value: they improve your tractor performance, maintain high productivity levels and preserve your tractor's value.

All McCormick spare parts rely on our extensive design and manufacturing expertise. Because when you choose McCormick, you are choosing quality without compromise.



POWER TECHNOLOGY SINCE 1847

Cyrus Hall McCormick was born in Virginia, United States, in 1809. A keen inventor, he stunned the agricultural world with inventions that mechanised the farm work. In 1831 he invented the first mechanical reaper. In 1847 McCormick established a factory for the production of grain harvesters. In 1866 the company adopted the red colour that still identifies the brand worldwide. In 1871 McCormick manufactured more machines than any other company in the world: 250 reapers per day. The first tractor, the Mogul 8-16, was launched in 1906. In those years, the company opened up factories in Canada, Great Britain, Germany, France and Sweden.

In the following years, the company was purchased and sold several times. In 2000 McCormick was acquired by the Argo Group, which relaunched the brand under the name McCormick Tractors International Limited. Today, McCormick is a world leader in the tractor industry and its name stands for uncompromising technology and innovative design. Thanks to heavy investments in research and development, the new generation of McCormick tractors leads the market for performance and innovation. Farmers look for efficient, reliable and versatile solutions to maximise their productivity – and this is exactly what we are proud to offer our customers.

		X6.125	X6.135
ENGINE			
Rated power (97/68/EC - ISO TR 14396)	hp / kW	119/88	127/93
Max power (97/68/EC - ISO TR 14396)	hp / kW	119/88	127/93
Rated engine speed	rpm	2200	
Engine speed at max power	rpm	1900	
Max torque at 1300 rpm	Nm	518	518
Torque backup		36%	30%
Manufacturer - Engine type		FPT - F36	
Stage V / Tier 4 Final exhaust after-treatment system		DOC + DPF + SCR	
Cylinders / Displacement / Valves		4 / 3.6 l / 16V	
Air filter system		dry air cleaner	
Air intake system		turbo aftercooled	
Fuel injection system		electronically-controlled high pressure common rail	
Maintenance		500 hours maintenance interval	
Cooling system		matrix radiator package	
Cooling fan		• belt-driven fan - o viscous fan	
Engine Memo Switch		•	
CAPACITIES			
Fuel tank	l	170	
AdBlue / DEF tank	l	23	
Cooling system	l	10	
TRANSMISSION			
Type		• electrohydraulic	
No. of gears - std		• 36 FWD +12 REV with XtraShift HML & RPS	
No. of gears - with creeper		o 48 FWD +16 REV with XtraShift HML & RPS	
Minimum speed	km/h	1.5 without creeper - 0.3 with creeper (1R 750mm)	
Engine speed at 40 km/h	rpm	• 1893	
Engine speed at 50 km/h	rpm	o 2200	
Transmission control		hand lever	
Forward/Reverse shuttle		• Reverse Power Shuttle (RPS) with modulation control	
REAR PTO			
Type		• electrohydraulic	
Speeds		• 540 / 540E / 1000 / 1000E with HML	
Ground speed PTO		o	
Engine speeds at rated PTO speeds	rpm	1944 / 1580 / 1952 / 1586	
Rotation - spline shaft type		clockwise (viewed from tractor rear) - • 1-3/8" PTO shaft with 6 splines - o 1-3/8" PTO shaft with 21 splines	
FRONT AND REAR AXLES			
Front rigid axle		• wide with brakes - o narrow with brakes	
Front suspended axle		o	
Traction type		4WD	
Front differential lock		Hydralock full locking differential	
Rear differential lock		• electrohydraulic	
Rear axle - flanged type		•	
BRAKING SYSTEM			
Front braking system		• automatic 4WD engagement when braking - o with front brakes	
Rear braking system		ring piston hydraulic brake	
Trailer braking system		• Dual-line hydraulic brake as per MR - o single-line hydraulic brake or CUNA - o dual-line pneumatic brake*	
Park Lock		o	
HYDRAULIC SYSTEM			
Hydraulic piston pump with CCLS system for hitch & remotes + steering - flow rate	l/min	• 110 + 38	
Rear remote valves - type, number, flow rate		• mechanical, up to 3 - o mechanical up to 3 + electronic 2	
Flow divider / Flow selector		o	
Free-flow return		•	
Mid-mounted remote valves - type, number, flow rate	l/min	2 mechanical with multifunction joystick - 80	
Hydraulic oil take-out capacity	l	• 34 - o 44 max oil take-our capacity with additional tank	

REAR 3-POINT HITCH		
Rear hitch control		• electronic
Category - coupler type		II - • fixed ball ends - o quick-hitch hooks - o telescopic lower links
Max lifting capacity at hitch points	kg	• 6000 with 2 assistor rams
FRONT 3-POINT HITCH		
Electronically-controlled front hitch		o
Category - coupler type		II - • quick-hitch hooks
Max lifting capacity at hitch points	kg	2250
FRONT PTO		
Type - Speed		o electrohydraulic multidisc clutch with modulated engagement - 1000
Engine speed at PTO rated speed	rpm	1920
Rotation - spline shaft type		o clockwise (viewed from tractor front) - • 1-3/8" PTO shaft with 6 splines
CAB		
Total View Slim mounted on silent blocks		•
McCormick mechanical cab suspension		o
In-cab noise level	dB(A)	78
Filtration Category		CAT 2
Cab heating / Climate control system		• heat and ventilation - o manual climate control
Opening front windscreen		•
Mechanical seat		•
Comfort air suspension seat		o
Hide-away buddy seat		o
Radio ready		•
Radio system		o - radio DAB mp3 with 2 speakers, bluetooth, aux-in and integrated microphone
Halogen work lights - opt 1		• 6 - 2 roof front, 2 roof rear, 2 bonnet
Halogen work lights - opt 2		o 8 - 2 roof front, 2 roof rear, 2 bonnet, 2 handles (LED)
LED work lights		o 10 - 2 roof front, 4 roof rear, 2 bonnet , 2 handles
Beacon lights		• left side - o left and right side - o without
ON-BOARD TECHNOLOGY		
PSM Precision Steering Management & ISObus - ready		o
PSM Precision Steering Management & ISObus - EGNOS full kit		o - with Topcon AES-35 steering wheel, X25 8.4" touchscreen and AGS-2 aerial
PSM Precision Steering Management & ISObus - RTK NTRIP full kit		o - AT Spare Parts
Fleet Management - ready		•
Fleet & Remote Diagnostics Management & xFarm Pro Pack - 1 year		• – on selected markets
Fleet & Remote Diagnostics Management & xFarm Pro Pack - 3 years		o – on selected markets
Fleet & Remote Diagnostics Management & xFarm Pro Pack - 5 years		o – on selected markets
WEIGHTS AND DIMENSIONS		
Wheelbase	mm	2420
Max height over cab without beacon lights	mm	2623 - measured with tyres 380/70R24 - 480/70R34
Max height from top of cab to rear axle centre	mm	1935
Max length with front weights - Track width	mm	(4256-4552) - measured with tyres 380/70R24 - 480/70R34
Steering radius	mm	4400 measured with tyres 480/65R24 - 540/65R38
Shipping weight - measured with average specs	kg	4800
Gross vehicle weight	kg	8500 (wide front axle) - 8000 (narrow front axle)
Max front and rear tyres sizes - (Index Radius -IR)	mm	480/65R24 - 540/65R38 (1R 800mm)
Front weight support / Front tow pin		•
Weights - no. x weight	kg	o 6x36 - o 10x36
Rear weights	kg	o 2x60 - o 4x60

Key: • standard o option * aftermarket



Power Technology.

via G. Matteotti, 7 | 42042 Fabbro [RE] Italia | t. +39.0522.656.111 | f. +39.0522.656.476
webmaster@argotracors.com | www.argotracors.com



graphic design: **gruppo saldatori** | bzzbzz@grupposaldatori.com
All data and illustrations provided in this brochure
are for information purposes



6736295A1