

# M SERIES FRONTLOADER



**McCORMICK**







# M SERIES FRONT LOADERS: THE PERFECT MATCH FOR MCCORMICK TRACTORS

The growing use of front loaders for a variety of applications has led McCormick to expand its product line with the addition of a front loader range. McCormick front loaders are factory fitted on the **X4, X5, X6, X6.4 and X7.4** tractor series. For all the other models, they can be purchased as aftermarket equipment from **Argo Tractors Spare Parts Division**. The **M Series** front loader range includes four models – **M60b/c, M80b/c/p M100b/c/p** and **M120c/p** – with lift heights at pivot ranging from 3.45 to 4.15 m and lift capacities at 2m lift height ranging between 1200 and 2400 kg. (Lift capacity is measured at 180 bar working pressure at base of implement 900 mm ahead of pivot).

McCormick front loaders are designed with strength, safety and comfort in mind. The boom is built with high-strength steel rectangular hollow

sections designed to provide superior torsional and bending strength.

The front loader also features a twin-accumulator suspension system (single-accumulator for M60b, M80b und M100b models) which absorbs impacts on rough terrain. This improves ride comfort and makes for more efficient handling of bulk goods, while minimising power loss at constant speed.

McCormick front loader range is complemented by a wide choice of implements which can be ordered from Argo Tractors Parts Division. Implement range includes general purpose buckets, light material buckets, manure forks, round bale spikes, pallet forks and combi forks. All these implements will enable the user to perform a variety of transport and handling operations, road maintenance activities and any other tasks requiring a front loader.



## TABLE OF CONTENTS

<b>USE</b>	<b>2</b>
<b>DESIGN</b>	<b>3</b>
<b>X8. 660-670-680</b>	<b>4</b>
<b>X7.6. 650-660-670-680-690</b>	<b>5</b>
<b>X7.4. 440-450-460</b>	<b>6</b>
<b>X6.4. 420-430-440</b>	<b>7</b>
<b>X6. 35-45-55</b>	<b>8</b>
<b>X5.35-45-55</b>	<b>9</b>
<b>X4. 30-40-50-55-60-70</b>	<b>10</b>
<b>X4M. 30-40-50</b>	<b>11</b>
<b>X4 F,GE,GB,XL. 30-40-50-60-70-80</b>	<b>12</b>
<b>X4 V. 30-40-50-60-70</b>	<b>13</b>
<b>X2. 20-30-35</b>	<b>14</b>
<b>IMPLEMENTS</b>	<b>15</b>

# USE

## EASE OF USE AND QUICK LOADER MOUNTING AND DISMOUNTING

Specially designed to suit the McCormick tractor range, M Series front loaders are extremely rugged and versatile. The front loader is comfortably operated from the tractor cab via a multi-function joystick.

The tractor cab is also equipped with a transparent roof hatch for extra visibility during loader operations.

An exclusive connect/disconnect system enables the operator to remove the loader from the tractor in a few minutes. The Euro implement holder also makes it easy and quick to mount and dismount implements.



### Front loader unlock lever

Two unlocking handles make it easy to connect and disconnect the loader from the tractor frame.



### Quick-connect multi-coupler for tractor/loader hydraulic connection

The hydraulic connection between tractor and loader is made via a quick-connect multicoupler which makes loader removal easy and quick.



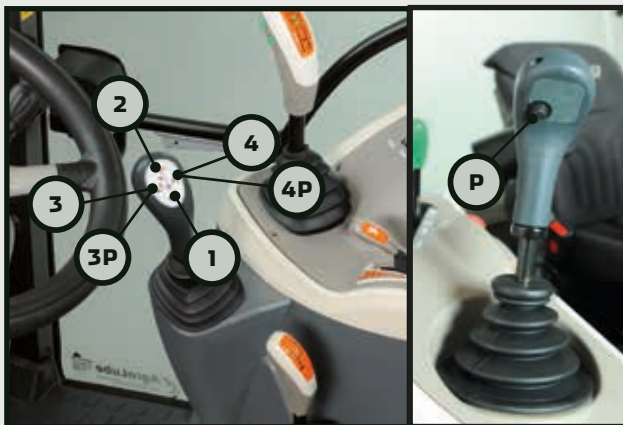
### Front loader mounting frame

The loader mounting frame is specially designed to perfectly fit McCormick tractors, making mounting and removing the loader quick and easy. It also ensures unobstructed forward view and provides best access to engine maintenance points even when the front loader is fitted.



### Front loader removal and parking

To remove loader from tractor, lower implement until it rests on the ground, lower parking stands, then disengage loader and disconnect hydraulic hoses. Lastly, slowly back tractor away from loader.



The loader joystick is located on the driver's right-hand side.

The joystick provides six main functions for operation of front loader and implements:

**Joystick pos. 1:** Boom lowering.

**Joystick pos. 2:** Boom raising.

**Joystick pos. 3:** Implement rollback.

**Joystick pos. 4:** Implement dumping.

Position 3 and 4 are activated by pressing the electrohydraulic

pushbutton control (P) integrated into the joystick. This enables implements with additional hydraulic functions, such as wrapped round bale clammers or manure forks with grapple, to be operated via a solenoid valve fitted on the loader front. The P pushbutton will enable operator to switch from the implement rollback and dumping positions 3 and 4 to the additional hydraulic functions (pos. 3P and 4P).

The joystick is also equipped with a sliding ring which locks out all functions for increased safety



McCormick front loaders are equipped with Euro implement holder enabling the use of a wide range of implements (fig. A).

A two-port solenoid valve can be optionally mounted to the loader front frame to operate cylinders on implements with additional hydraulic functions (fig. B).

The lift cylinders are equipped with two nitrogen accumulators to cushion loader oscillations arising during the ride. This results in smoother operation and enhanced driving comfort (fig. C).





# X8

MODEL	660	670	680
FRONT LOADER	M350P	M350P	M350P



Specifications	
MODEL	660-670-680
FRONT LOADER	M350 <sup>o</sup>
Tractor power hp	+ 250
Lift capacity at pivot* m	5,50
Lift capacity of pallet fork at ground level kg <sup>(1)</sup>	4200
Lift capacity of pallet fork at 2m lift height kg <sup>(1)</sup>	3700
Lift capacity of pallet fork at maximum height kg <sup>(1)</sup>	3000
Digging angle (at ground level)*	49°
Dump angle (at full height)*	50°
Lift cylinder OD (Ø mm)	100
Mechanical self-levelling	Yes
Euro implement holder	Yes
Distance between boom arms mm	1400
Mounting frame type	HD3
Boom weight without options kg	1200

\* Features may vary according to tractor model-  
<sup>(1)</sup> 180 bar control pressure at 60 l/min flow rate, measured 900 mm ahead of pivot.



MODEL	650	660	670	680	690
FRONT LOADER	M140P	M140P	M180P	M180P	M180P



## Specifications

MODEL	650-660	670-680-690
FRONT LOADER	M140 <sup>P</sup>	M180 <sup>P</sup>
Tractor power hp	120-180	+ 150
Lift capacity at pivot* m	4,27	4,50
Lift capacity of pallet fork at ground level kg <sup>(1)</sup>	2910	2900
Lift capacity of pallet fork at 2m lift height kg <sup>(1)</sup>	2545	2560
Lift capacity of pallet fork at maximum height kg <sup>(1)</sup>	2125	2300
Digging angle (at ground level)*	49°	48°
Dump angle (at full height)*	54°	63°
Lift cylinder OD (Ø mm)	Ø 80	Ø 90
Mechanical self-levelling	Yes	Yes
Euro implement holder	Yes	Yes
Distance between boom arms mm	1020	1120
Mounting frame type	Mega Matic	Mega Matic HD
Implement holder pre-equipped for Manip'Pic	-	-
Boom weight without options kg	820	990

\* Features may vary according to tractor model-

<sup>(1)</sup> 180 bar control pressure at 60 l/min flow rate, measured 900 mm ahead of pivot

# X7.4

MODEL	440	450	460
FRONT LOADER	M120C	M120P	M140P



## Specifications

MODEL	440-450		460
FRONT LOADER	M120 <sup>C</sup>	M120 <sup>P</sup>	M140 <sup>P</sup>
Tractor power hp	95-140	95-160	120-180
Lift capacity at pivot* m	4,13	4,15	4,27
Lift capacity of pallet fork at ground level kg <sup>(1)</sup>	2450	2510	2910
Lift capacity of pallet fork at 2m lift height kg <sup>(1)</sup>	2280	2400	2545
Lift capacity of pallet fork at maximum height kg <sup>(1)</sup>	2030	2160	2125
Digging angle (at ground level)*	51°	52°	49°
Dump angle (at full height)*	54°	55°	54°
Lift cylinder OD (Ø mm)	Ø80		
Mechanical self-levelling	Yes		
Euro implement holder	Yes		
Distance between boom arms mm	1020		
Mounting frame type	Méga Matic		
Implement holder pre-equipped for MANIP'PIC	Optional		-
Boom weight without options kg	640	700	820

\* Features may vary according to tractor model-

<sup>(1)</sup> 180 bar control pressure at 60 l/min flow rate, measured 900 mm ahead of pivot.



MODEL	420	430	440
FRONT LOADER	M80B/C/P	M80/M100B/C/P	M100C/P



## Specifications

MODEL	420-430			430			440	
FRONT LOADER	M80 <sup>B</sup>	M80 <sup>C</sup>	M80 <sup>P</sup>	M100 <sup>B</sup>	M100 <sup>C</sup>	M100 <sup>P</sup>	M120 <sup>C</sup>	M120 <sup>P</sup>
Tractor power hp	60 - 110	60-110	60-110	70 - 120	70-120	70-120	95-140	95-160
Lift capacity at pivot* m	3,80	3,77	3,80	4,00	3,92	4,00	4,13	4,15
Lift capacity of pallet fork at ground level kg <sup>(1)</sup>	1600	1800	2100	1800	2350	2440	2450	2510
Lift capacity of pallet fork at 2m lift height kg <sup>(1)</sup>	1650	1430	1810	1850	1960	2160	2280	2400
Lift capacity of pallet fork at maximum height kg <sup>(1)</sup>	1500	1100	1420	1700	1500	1880	2030	2160
Digging angle (at ground level)*	45°	49°	49°	49°	49°	51°	51°	52°
Dump angle (at full height)*	59°	53°	56°	59°	55°	54°	54°	55°
Lift cylinder OD (Ø mm)	Ø70	Ø70	Ø75	Ø75	Ø75	Ø80	Ø80	Ø80
Mechanical self-levelling	Yes							
Euro implement holder	Yes							
Distance between boom arms mm	1020							
Mounting frame type	Mega Matic							
Implement holder pre-equipped for MANIP'PIC	Optional							
Boom weight without options kg	435	500	640	460	570	670	640	700

\* Features may vary according to tractor model-

<sup>(1)</sup> 180 bar control pressure at 60 l/min flow rate, measured 900 mm ahead of pivot.

# X6

MODEL	35	45	55
FRONT LOADER	M80B/C/P	M80/M100B/C/P	M100B/C/P



## Specifications

MODEL	35-45			45-55		
FRONT LOADER	M80 <sup>B</sup>	M80 <sup>C</sup>	M80 <sup>P</sup>	M100 <sup>B</sup>	M100 <sup>C</sup>	M100 <sup>P</sup>
Tractor power hp	60 - 100	60 - 100	60 - 100	70 - 120	70 - 120	70 - 120
Lift capacity at pivot* m	3,80	3,77	3,80	4,00	3,92	4,00
Lift capacity of pallet fork at ground level kg <sup>(1)</sup>	1600	1800	2100	1800	2350	2440
Lift capacity of pallet fork at 2m lift height kg <sup>(1)</sup>	1650	1430	1810	1850	1960	2160
Lift capacity of pallet fork at maximum height kg <sup>(1)</sup>	1700	1500	1880	1700	1500	1880
Digging angle (at ground level)*	45°	49°	49°	49°	49°	51°
Dump angle (at full height)*	59°	53°	56°	59°	55°	54°
Lift cylinder OD (Ø mm)	Ø70	Ø70	Ø75	Ø75	Ø75	Ø80
Mechanical self-levelling	Yes			Yes		
Euro implement holder	Yes			Yes		
Distance between boom arms mm	1020			1020		
Mounting frame type	Méga Matic			Méga Matic		
Implement holder pre-equipped for Manip'Pic	Optional	Optional	Optional	Optional	Optional	Optional
Boom weight without options kg	435	500	640	460	570	670

\* Features may vary according to tractor model-

<sup>(1)</sup> 180 bar control pressure at 60 l/min flow rate, measured 900 mm ahead of pivot.





MODEL	35	45	55
FRONT LOADER	M80B/C/P	M80B/C/P	M100B/C/P



## Specifications

MODEL	35-45-55		
FRONT LOADER	M80 <sup>B</sup>	M80 <sup>C</sup>	M80 <sup>P</sup>
Tractor power hp	60 - 110	60-110	60-110
Lift capacity at pivot* m	3,80	3,77	3,80
Lift capacity of pallet fork at ground level kg <sup>(1)</sup>	1600	1800	2100
Lift capacity of pallet fork at 2m lift height kg <sup>(1)</sup>	1650	1430	1810
Lift capacity of pallet fork at maximum height kg <sup>(1)</sup>	1500	1100	1420
Digging angle (at ground level)*	45°	49°	49°
Dump angle (at full height)*	59°	53°	56°
Lift cylinder OD (Ø mm)	Ø70	Ø70	Ø75
Mechanical self-levelling	Si		
Euro implement holder	Si		
Distance between boom arms mm	1020		
Mounting frame type	Méga Matic		
Implement holder pre-equipped for Manip'Pic	Optional	Optional	
Boom weight without options kg	435	500	640

\* Features may vary according to tractor model-

<sup>(1)</sup>180 bar control pressure at 60 l/min flow rate, measured 900 mm ahead of pivot.

# X4

MODEL	30	40	50	55	60	70
FRONT LOADER	M60B/C	M60B/C	M60B/C	M60B/C	M60B/C	M60B/C
FRONT LOADER				M80B/C/P	M80B/C/P	M80B/C/P



Specifications					
MODEL	30-40-50		55-60-70		
FRONT LOADER	M60 <sup>B</sup>	M60 <sup>C</sup>	M80 <sup>B</sup>	M80 <sup>C</sup>	M80 <sup>P</sup>
Tractor power hp	50 - 100	50-100	60 - 110	60-110	60-110
Lift capacity at pivot* m	3,50	3,45	3,80	3,77	3,80
Lift capacity of pallet fork at ground level kg <sup>(1)</sup>	1380	1770	1600	1800	2100
Lift capacity of pallet fork at 2m lift height kg <sup>(1)</sup>	1400	1240	1650	1430	1810
Lift capacity of pallet fork at maximum height kg <sup>(1)</sup>	1300	1000	1500	1100	1420
Digging angle (at ground level)*	44°	44°	45°	49°	49°
Dump angle (at full height)*	59°	57,5°	59°	53°	56°
Lift cylinder OD (Ø mm)	Ø65		Ø70		Ø75
Mechanical self-levelling	Yes				
Euro implement holder	Yes				
Distance between boom arms mm	1020				
Mounting frame type	Méga Matic				
Implement holder pre-equipped for Manip'Pic	Optional				
Boom weight without options kg	400	430	435	500	640

\* Features may vary according to tractor model- <sup>(1)</sup>180 bar control pressure at 60 l/min flow rate, measured 900 mm ahead of pivot.





MODEL	30	40	50
FRONT LOADER	M60B/C	M60B/C	M60B/C



Specifications		
MODEL	30-40-50	
FRONT LOADER	M60 <sup>B</sup>	M60 <sup>C</sup>
Tractor power hp	50 - 100	50-100
Lift capacity at pivot* m	3,50	3,45
Lift capacity of pallet fork at ground level kg <sup>(1)</sup>	1380	1770
Lift capacity of pallet fork at 2m lift height kg <sup>(1)</sup>	1400	1240
Lift capacity of pallet fork at maximum height kg <sup>(1)</sup>	1300	1000
Digging angle (at ground level)*	44°	44°
Dump angle (at full height)*	59°	57,5°
Lift cylinder OD (Ø mm)	Ø65	Ø65
Mechanical self-levelling	Yes	
Euro implement holder	Yes	
Distance between boom arms mm	1020	
Mounting frame type	Méga Matic	
Implement holder pre-equipped for Manip'Pic	Optional	
Boom weight without options kg	400	430

\* Features may vary according to tractor model-

<sup>(1)</sup> 180 bar control pressure at 60 l/min flow rate, measured 900 mm ahead of pivot.

# X4 (F, GE, GB, XL)

## CAB/PLAT

MODEL	30	40	50	60	70	80
FRONT LOADER	M40NB/N	M40NB/N	M40NB/N	M40NB/N	M40NB/N	M40NB/N
FRONT LOADER	M50NB/N	M50NB/N	M50NB/N	M50NB/N	M50NB/N	M50NB/N



### Specifications

MODEL	30-40-50-60-70-80-F-GE-GB-XL			
FRONT LOADER	M40 <sup>NB</sup>	M40 <sup>N</sup>	M50 <sup>NB</sup>	M50 <sup>N</sup>
Tractor power hp	40 - 90		50 - 115	
Lift capacity at pivot* m	2,80	2,85	3,45	3,45
Lift capacity of pallet fork at ground level kg <sup>(1)</sup>	1080	1185	1150	1225
Lift capacity of pallet fork at 2m lift height kg <sup>(1)</sup>	1100	1070	1150	1200
Lift capacity of pallet fork at maximum height kg <sup>(1)</sup>	1025		1150	
Digging angle (at ground level)*	38°	45°	38°	45°
Dump angle (at full height)*	77°	57,5°	66°	57,5°
Lift cylinder OD (Ø mm)	Ø60			
Mechanical self-levelling	Si			
Euro implement holder	Si			
Distance between boom arms mm	940			
Mounting frame type	GM			
Implement holder pre-equipped for MANIP/PIC	Optional			
Boom weight without options kg	330	340	340	380

\* Features may vary according to tractor model-

<sup>(1)</sup> 180 bar control pressure at 60 l/min flow rate, measured 900 mm ahead of pivot.





# X4V

## CAB

MODEL	30	40	50	60	70
FRONT LOADER	M40NB/N	M40NB/N	M40NB/N	M40NB/N	M40NB/N
FRONT LOADER	M50NB/N	M50NB/N	M50NB/N	M50NB/N	M50NB/N



Specifications				
MODEL	30-40-50-60-70-V			
FRONT LOADER	M40 <sup>NB</sup>	M40 <sup>N</sup>	M50 <sup>NB</sup>	M50 <sup>N</sup>
Tractor power hp	40 - 90		50 - 115	
Lift capacity at pivot* m	2,80	2,85	3,45	3,45
Lift capacity of pallet fork at ground level kg <sup>(1)</sup>	1080	1185	1150	1225
Lift capacity of pallet fork at 2m lift height kg <sup>(1)</sup>	1100	1070	1150	1200
Lift capacity of pallet fork at maximum height kg <sup>(1)</sup>	1025		1150	
Digging angle (at ground level)*	38°	45°	38°	45°
Dump angle (at full height)*	77°	57,5°	66°	57,5°
Lift cylinder OD (Ø mm)	Ø60			
Mechanical self-levelling	Yes			
Euro implement holder	Yes			
Distance between boom arms mm	940			
Mounting frame type	GM			
Implement holder pre-equipped for MANIP/PIC	Optional			
Boom weight without options kg	330	340	340	380

\* Features may vary according to tractor model-  
<sup>(1)</sup> 180 bar control pressure at 60 l/min flow rate, measured 900 mm ahead of pivot.

# X2

## CAB/PLAT

MODEL	20	30	35
FRONT LOADER	MS25	MS25	MS25
FRONT LOADER	MS25+	MS25+	MS25+
FRONT LOADER	MC25	MC25	MC25



### Specifications

MODEL	20-30-35		
FRONT LOADER	MS25	MS25+	MC25
Tractor power hp	20 - 50	20 - 50	20 - 50
Lift capacity at pivot* m	2.60	2,60	2.60
Lift capacity of pallet fork at ground level kg <sup>(1)</sup>	510	420	530
Lift capacity of pallet fork at 2m lift height kg <sup>(1)</sup>	500	430	530
Lift capacity of pallet fork at maximum height kg <sup>(1)</sup>	470	380	530
Digging angle (at ground level)*	25°	45°	46°
Dump angle (at full height)*	35°	50*	50°
Mechanical self-levelling	-	-	Yes
Implement holder with automatic latch system	-	Yes	Yes
Boom weight without options kg	220	220	240

\* Features may vary according to tractor model-

<sup>(1)</sup> 180 bar control pressure at 60 l/min flow rate, measured 900 mm ahead of pivot.







M SERIES FRONTLOADER

M SERIES / M STANDARD

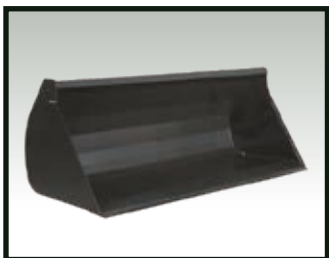
FRONT LOADER WITH SELF-LEVELLING SYSTEM – <b>M SERIES</b>	M60	M80	M100	M120
FRONT LOADER WITHOUT SELF-LEVELLING SYSTEM – <b>M STANDARD</b>	MS60	MS80	MS100	MS120

For tractors from 50 to 140 hp

	M SERIES				M STANDARD			
	60	80	100	120	60	80	100	120
Tractor power hp	50-100	60-110	70-120	95-140	50-80	60-110	70-120	95-140
Lift capacity at pivot* m	3,45	3,77	3,92	4,13	3,45	3,77	3,92	4,13
Lift capacity of pallet fork at ground leve kg <sup>(1)</sup>	1770	1800	2350	2450	1410	1440	1880	1950
Lift capacity of pallet fork at 2m lift height 2 m <sup>(1)</sup>	1240	1430	1960	2280	990	1150	1570	1850
Lift capacity of pallet fork at maximum height kg <sup>(1)</sup>	1000	1100	1500	2030	800	880	1200	1650
Digging angle (at ground level)*	44°	49°	49°	51°	44°	49°	49°	51°
Dump angle (at full height)*	57,5°	53°	55°	54°	57,5°	53°	55°	54°
Lift cylinder OD (Ø mm)	Ø 65	Ø 70	Ø 75	Ø 80	Ø 65	Ø 70	Ø 75	Ø 80
Mechanical self-levelling	Yes	Yes	Yes	Yes	No	No	No	No
Mechanical self-levelling	Yes	Yes	Yes	Yes	Yes	Yes	Yes	Yes
Distance between boom arms mm	1020	1020	1020	1020	1020	1020	1020	1020
Mounting frame type	MM	MM	MM	MM	MM	MM	MM	MM
Implement holder pre-equipped for Manip'Pic	Optional	Optional	Optional	Optional	Optional	Optional	Optional	Optional
Boom weight without options kg	430	500	570	640	430	480	550	620

\* Features may vary according to tractor model - 180 bar control pressure at 60 l/min flow rate, measured 900 mm ahead of pivot.

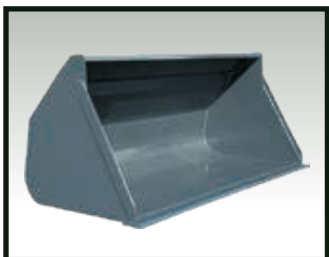




## STANDARD BUCKET - Without teeth

	WIDTH (M)	CAPACITY (L) <sup>(1)</sup>	WEIGHT (KG) <sup>(2)</sup>
BP 180 <sup>(2)</sup>	1,80	605/785	266
BP 200 <sup>(2)</sup>	2,00	675/875	284
BP 225 <sup>(2)</sup>	2,25	760/985	305
BP 245 <sup>(2)</sup>	2,45	825/1070	322

<sup>(1)</sup> Actual capacity / Useful capacity. - <sup>(2)</sup> With wear strip 150x15. - <sup>(3)</sup> Approximate weight.



## LIGHT MATERIAL BUCKET - High volume

	WIDTH (M)	CAPACITY (L) <sup>(1)</sup>	WEIGHT (KG) <sup>(2)</sup>
BL 170 <sup>(2,4)</sup>	1,70	1035/1242	380
BL 200 <sup>(3,4)</sup>	2,00	1215/1458	410
BL 220 <sup>(3,4)</sup>	2,20	1340/1608	440
BP 240 <sup>(3,4)</sup>	2,40	1460/1752	470

<sup>(1)</sup> Actual capacity / Useful capacity. - <sup>(2)</sup> With wear strip 150x15. - <sup>(3)</sup> With wear strip 150x20. - <sup>(4)</sup> With wear strip.

<sup>(5)</sup> Approximate weight.



## EARTH BUCKET - Removable teeth

	WIDTH (M)	CAPACITY (L) <sup>(1)</sup>	WEIGHT (KG) <sup>(2)</sup>
BTB 130 - 5 TEETH	1,30	345/450	183
BTB 150 - 6 TEETH	1,50	400/515	200
BTB 180 - 7 TEETH	1,80	480/625	230
BTB 200 - 7 TEETH	2,00	535/695	245
BTB 225 - 8 TEETH	2,25	600/780	265

<sup>(1)</sup> Actual capacity / Useful capacity. - <sup>(2)</sup> Approximate weight.



## MULTI-PURPOSE BUCKET - 3rd function required

	WIDTH (M)	N. TEETH	WEIGHT (KG) <sup>(2)</sup>
MB 130	1,30	9	280
MB 150	1,50	10	300
MB 170	1,70	11	325
MB 200	2,00	13	360
MB 220	2,20	13	400

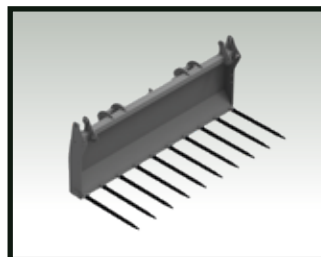
<sup>(2)</sup> Approximate weight.



## MULTI-PURPOSE BUCKET AV - 3rd function required

	WIDTH (M)	N. TEETH	WEIGHT (KG) <sup>(2)</sup>
MBV 150	1,30 - 1,50	9	280
MBV 170	1,50 - 1,70	10	300
MBV 190	1,70 - 1,90	11	325
MBV 220	2,00 - 2,20	13	360
MBV 240	2,20 - 2,40	13	400

<sup>(2)</sup> Approximate weight.



## MANURE FORK - Bolted teeth - Length 0.82

	WIDTH (M)	N. TEETH	WEIGHT (KG) <sup>(2)</sup>
FF 130B <sup>(1)</sup> / F 130G <sup>(2)</sup>	1,30	7	110
FF 150B <sup>(1)</sup> / F 150G <sup>(2)</sup>	1,50	8	120
FF 170B <sup>(1)</sup> / F 170G <sup>(2)</sup>	1,70	9	135
FF 200B <sup>(1)</sup> / F 200G <sup>(2)</sup>	2,00	10	150
FF 220B <sup>(1)</sup> / F 220G <sup>(2)</sup>	2,20	11	158

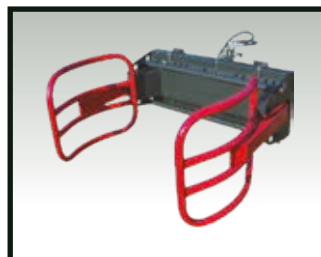
<sup>(1)</sup> Bolted teeth - L. 0,82 m. - <sup>(2)</sup> Removable teeth with bolts - Lg. 0,87 m. - <sup>(3)</sup> Approximate weight.



## PALLET FORK - Forged forks

	CAPACITY (KG)	FORKS (MM)
TP1650	1650	1000 x 80 x 40
TP2500	2500	1200 x 100 x 45

Recommended for self-levelling front loaders.



## MANIP' BAL BRE 4 - Round bale clammer

	WEIGHT (KG) <sup>(2)</sup>
BRE 4	245
BRE 4 - L	130

Wrapped round bales Ø 0.90 m to 1.75 m (Max. weight 1200 kg). Synchronisation spring on both arms to facilitate self-centring. Integrated check valve to hold bale in place. 3rd function required. <sup>(2)</sup> Approximate weight.

